



fluidity.
nonstop

IT'S ABOUT KEEPING YOUR PROCESSES RUNNING



Installation



Monitoring



Repair

 **AXFLOW**



fluidity. nonstop

IT'S ABOUT KEEPING YOUR PROCESSES RUNNING

About AxFlow

Part of Axel Johnson AB with sales of over 7 billion euro and 20,000 employees worldwide, the AxFlow group is one of Europe's largest suppliers of process pumps with offices a presence in 28 European countries, South Africa, Australia and New Zealand.

In the UK AxFlow has over 50 years history operating from 5 locations across the country from which it supplies a large range of process pumps and a comprehensive pump service and repair package.



AxFlow has developed *fluidity.nonstop* a concept through which we provide products and services that encompass all aspects connected with the smooth running of process pumps.

AxFlow in Great Britain

In the UK AxFlow has over 65 years history operating from 5 locations across the country from which we supply a multitude of process pumps and a range of pump service and repair packages.

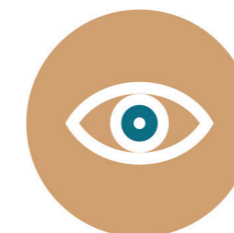


AxFlow is the largest supplier of positive displacement pumps in the UK and is a key player in the provision of pump and pump related products to the UK Food & Beverage Production Industry. Our range of hygienic pump products includes; AODD, centrifugal, rotary lobe, rotary circumferential piston, eccentric disc and vane pumps.



Installation

We can install and commission your pumps to ensure they work properly from the word "go" and identify any issues with your system that may adversely affect the pump.



Monitoring

We can monitor your pumps to check they're working OK by performing regular checks or can foresee problems and carry out planned maintenance work, therefore preventing pump failures and process stoppages.



Repair

We can undertake numerous types of work on-site or at one of our Service Centres. This work can range from simple maintenance, to completely rebuilding your pump by recreating key components.

We Get Your Pump Working To Your Needs

The long term performance and operating costs of a pump can be significantly affected by how well it's been installed.

Can you be certain that the pump is doing the job you asked it to do? If it isn't, then you might not get what you're expecting or the pump might not last as long as you'd envisaged.

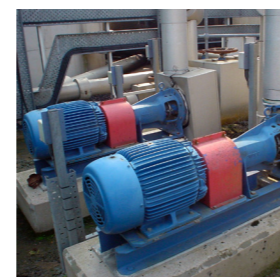
Our installation and commissioning services can ensure that the pumps are working properly and according to the process needs.



WHAT WE OFFER

Our pump installation and commissioning services can be as comprehensive or as simple as you want.

- Comprehensive pre delivery inspection
- Pre delivery performance and run tests
- Delivery to site
- Accurate alignment of pump sets by means of laser equipment
- Correct pump start-up
- On site performance verification
- Clarification of the actual duty
- Initial logging of pump characteristics such as noise, power consumption and vibration
- Optimised pump set-up
- On site training of maintenance operatives



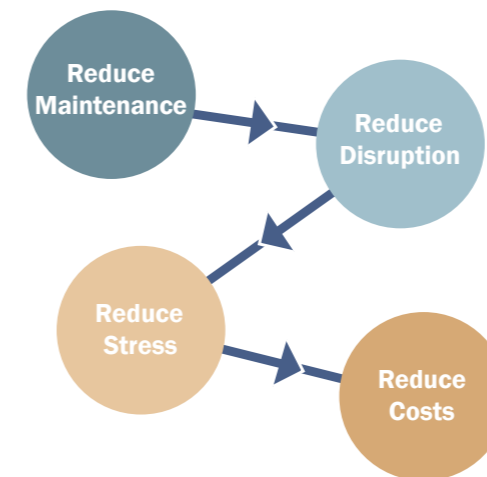
AxFlow are accredited members of numerous regulating bodies

- NICEIC
- Achilles - UVDB
- Achilles - FPAL
- Achilles - Chemicals & Allied Trades
- Avetta
- Safecontractor
- SSIP
- Constructionline
- SafeContractor

Reduce Your Cost With Good Pump Monitoring

Monitoring your pumps is absolutely essential if you want to reduce expensive pump repairs and avoid unexpected pump failures. But, in addition to this, monitoring your pumps will prolong their life, help identify problems somewhere else in your system and reduce your power consumption by keeping them at their optimum efficiency.

We have experienced personnel trained to use the latest monitoring equipment with years of pump knowledge.



WHAT WE OFFER

- Scheduled site visits to measure vibration levels
- Permanent 24/7 vibration monitoring
- Bearing oil analysis
- Thermal imaging
- Planned maintenance schedule
- On site training of maintenance operatives
- Analysis of your liquids with our in-house rheology measuring equipment

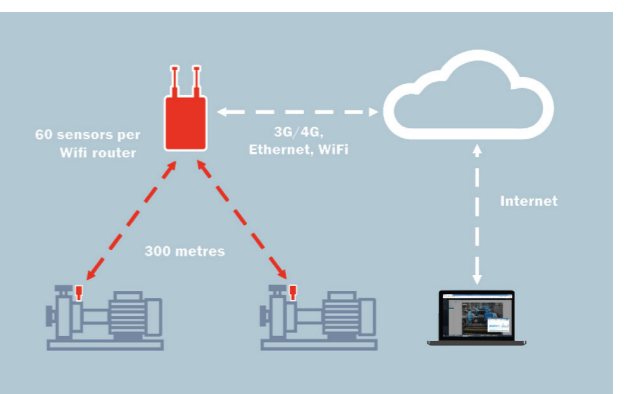
Onsite Vibration Measurement

- AxFlow offer onsite vibration monitoring throughout the uk.
- No capital outlay
- Vibration and shock pulse method analysis
- The easiest way to perform multipoint measurements
- Best way to identify hidden pump problems



Permanent 24/7 Monitoring

- State-of-the-art remote wireless monitoring
- Vibration and temperature monitoring
- Detailed and historical data
- Automated alerts
- Lowest long term cost





Our Service Centres Across The Country

At some point during their life all pumps require maintaining or repairing.

At AxFlow we have Service Centres spread across the country equipped with an impressive array of engineering equipment and test facilities.



WHAT WE OFFER

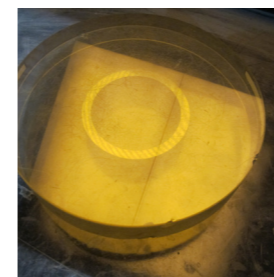
All of our repair and maintenance work is fully documented as would be expected of a company such as AxFlow.

- Machining in-house
- Belzona coating
- Dynamic balancing
- Mechanical seal overhaul
- Metal spraying and fusion welded coatings
- Laser alignment
- Hydrostatic pressure testing
- Motor rewinding
- Hygienic pump repair
- The ability to re-engineer a wide range of pump components
- On site training of maintenance operatives



Dynamic Balancing

Vibration caused by wear of impellers can be a big factor in early pump failures. AxFlow can balance rotating assemblies up to 1.5 tonnes to ISO 1940 G1. As a minimum standard, we balance to G2.5 (maximum 2.5mm/s).



Laser Alignment

Using the latest Laser Alignment instrument and software we can align your pump and motor with greater accuracy than the coupling manufacturers recommendation to ensure correct coupling alignment to maximise bearing and mechanical seal life.



Re-engineered Components

With many manufacturers having ceased production replacement parts may have become impossible to get, as a result we have become experts in the re-casting and machining of obsolete pump components.



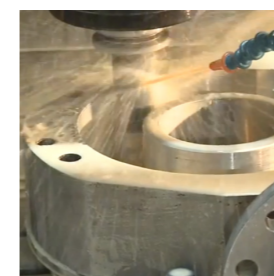
Mechanical Seal Refurbishment

We are specialists in the refurbishment of mechanical seals from chemical/ food pumps to chemical reactors and mixers. We can handle sizes from 25 to 330 mm shaft size. Consequently, we have extensive lapping and ceramic/ carbide face manufacturing facilities.



Belzona Coating

Using the Belzona range of polymeric and elastomeric coatings we can offer a solution to most problems from repair of a badly worn component, to prevention of erosion/corrosion of a new part. Coatings can be applied on site or off site depending on the size of job and access restrictions.



In-House Machining

We boast an impressive array of engineering equipment spread across our 5 Service Centres. This allows us to react quickly and ensure the quality of our work is maintained.



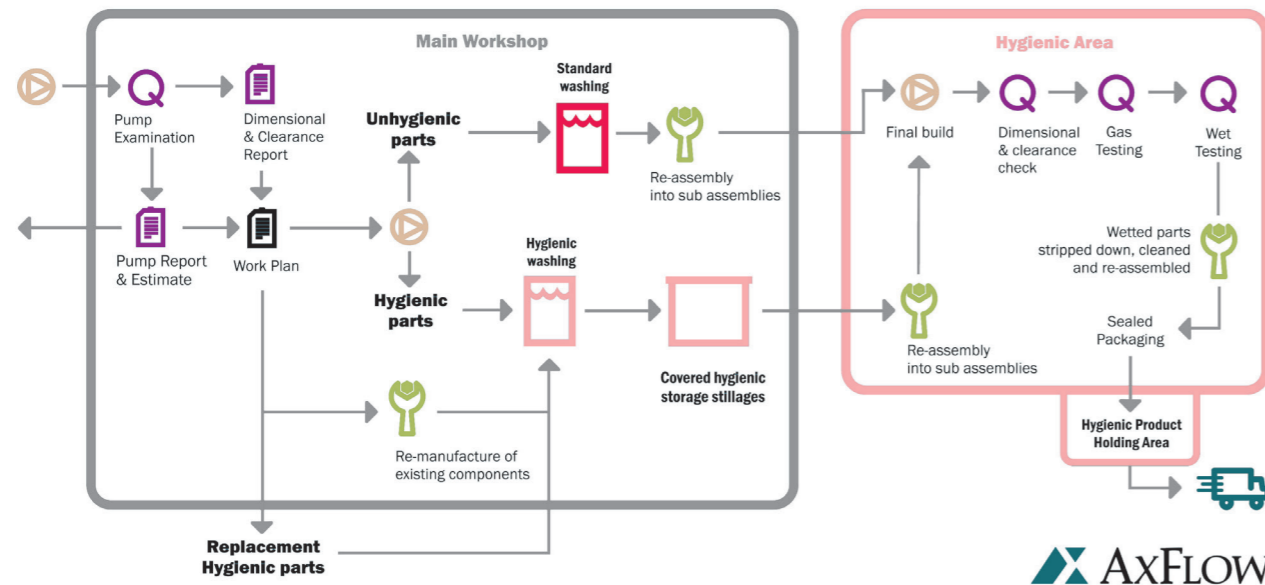
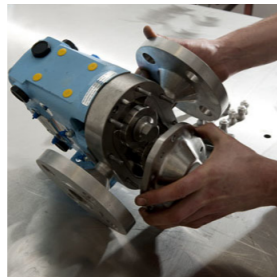
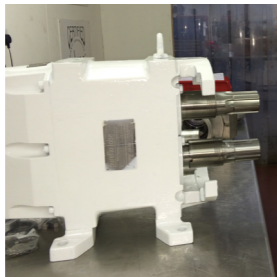
In-House Paint Plant

We have invested in our own paint plants that allow us to ensure the quality of our paint finish and the ability to offer a range of specialised finishes.

Comprehensive Hygienic Facilities And Procedures

Our hygienic repair system was developed in partnership with a major UK food manufacturer and is based on five underlying principles:

1. Separating the hygienic and unhygienic parts as soon as possible.
2. Keeping them separate until the very last moment by using different equipment and areas (even within the main workshop).
3. Using the hygienic area as little as possible.
4. Recognizing that internal tolerances are critical to many processes.
5. Testing every pump we repair.



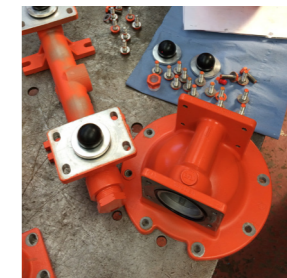
We Know Positive Displacement Pumps






AxFlow are the acknowledged European leaders in the supply of positive displacement pumps.

This means that we truly understand positive displacement pumps and the special challenges that their repair can pose. It also means that we hold large stocks of components that reduce our repair times.

Our repair service also includes the maintenance of vacuum pumps.

AxFlow are the exclusive UK distributor for their pumps, heat exchangers, valves and homogenisers.



WHAT WE OFFER

- Only use original manufacturer parts
- Recertification of ATEX models
- 12 months warranty on all repaired parts
- Air and water test on all repairs

Extensive Maintenance Services For The Entire APV Range

AxFlow boasts a nationwide network of pump repair facilities and an experienced strategic partner who handles the servicing of APV dispersion products, valves and heat exchangers that includes a 48 hr plate pack replacement service.





Vibration Analysis By Experts Using The Latest Technologies

Vibration measurement can highlight a range of pump issues long before they become a problem.

At AxFlow we utilise the latest vibration and noise measuring equipment giving us the ability to offer quick low cost checks and comprehensive fault finding analysis.

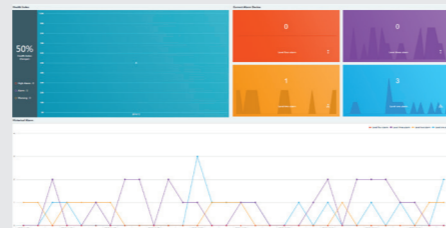
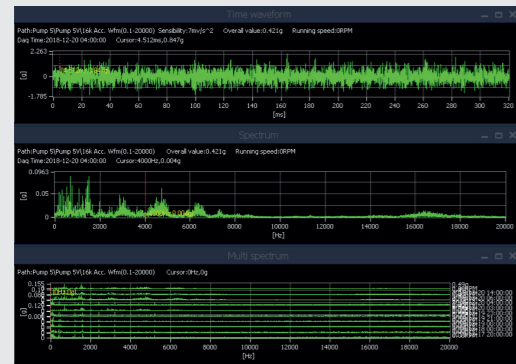
In addition to measuring the vibration occurring with in a piece of equipment, AxFlow are also able to employ the Shock Pulse Method with our portable equipment.



WHAT WE OFFER

Depending on the type of pump and the level of analysis, vibration monitoring can identify these pump issues.

- Cavitation
- Worn pump bearings
- Misaligned couplings
- Misaligned shafts
- Unbalanced impellers
- Worn motor bearings
- Badly fitted mechanical seals
- Low lubrication levels
- Worn gears



System Features

- Very easy installation
- ATEX certified
- 2 in 1 sensor
- Automatic alarms can be sent digitally
- Live data can be referenced with your process activities.
- Easily scalable.

Analysis

- Easy configuration
- Web based overview portal
- Alarm threshold warnings
- Multiple data analysis tools including trend, waveform, spectrum, waterfall, envelope demodulation and cross phase analysis
- Regular condition reports
- Equipment investigation.



We Have A Great Range Of Mechanical Seals

We offer a comprehensive range of Mechanical seals and seal service. available from AxFlow. The effectiveness of mechanical seals is critical to the optimal operation of rotating equipment. We hold a comprehensive range of spring loaded and cartridge mechanical seals in stock. We have the in-house facility to re-lapp seal faces and re-condition highly expensive mechanical seals.



2-3 days

Standard lead time for stocked parts and products



AxFlow Have Invested over £800,000 In APV Spare Parts And Products

Monitoring

DW seals, O rings impellers. W+ seals, O rings impellers, complete pumps

Valves

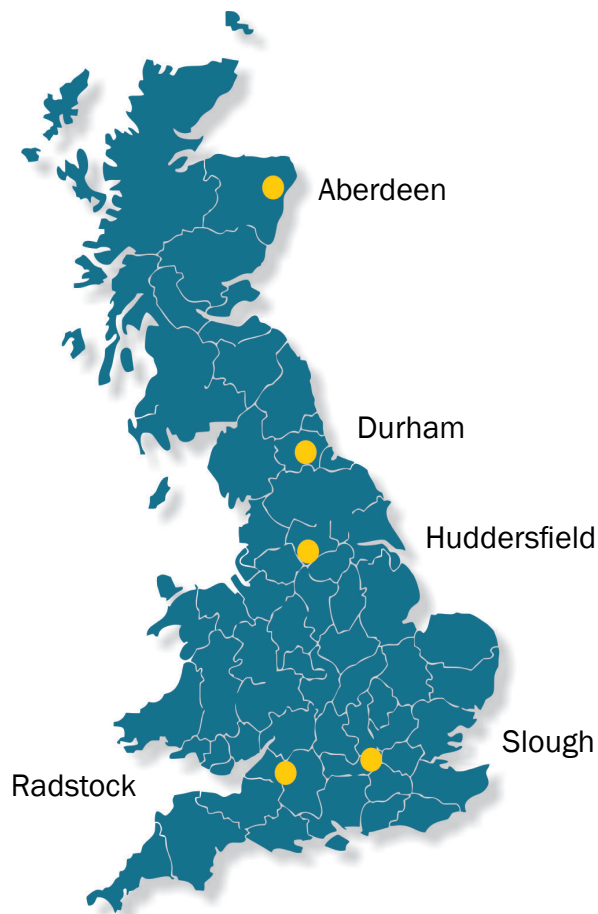
Seal kits, actuators, O rings, springs, flaps, gaskets flanges and complete SV1 valves.

Heat Exchangers

Plates, and plate gaskets.

Homogenisers

Guiding rings, bearings, plungers, pistons, valves, valve seats, impact rings, seals and packings.



email: info@AxFlow.co.uk www.AxFlow.co.uk

Slough (Head Office)

820 Yeovil Road, Slough Trading Estate
Slough SL1 4JA
Tel.: +44 (0)1753 255 600

Radstock

14 Haydon Industrial Estate
Radstock, BA3 3RD
Tel. + 44 (0)1761 433285

Huddersfield

Unit 9a, Fieldhouse Business Park, Old Fieldhouse Lane,
Huddersfield, HD2 1FA
Tel.: +44 (0)1484 543 649

Scotland

Unit 3, Harlaw Centre, Howe Moss Crescent,
Kirkhill Industrial Estate, Dyce, Aberdeen, AB21 0GN
Tel.: +44 (0)1224 729 367

Durham

Unit 16, Chilton Industrial Estate, Avenue 3,
Chilton, Ferryhill, DL17 0QS
Tel.: +44 (0)1325 327 322